

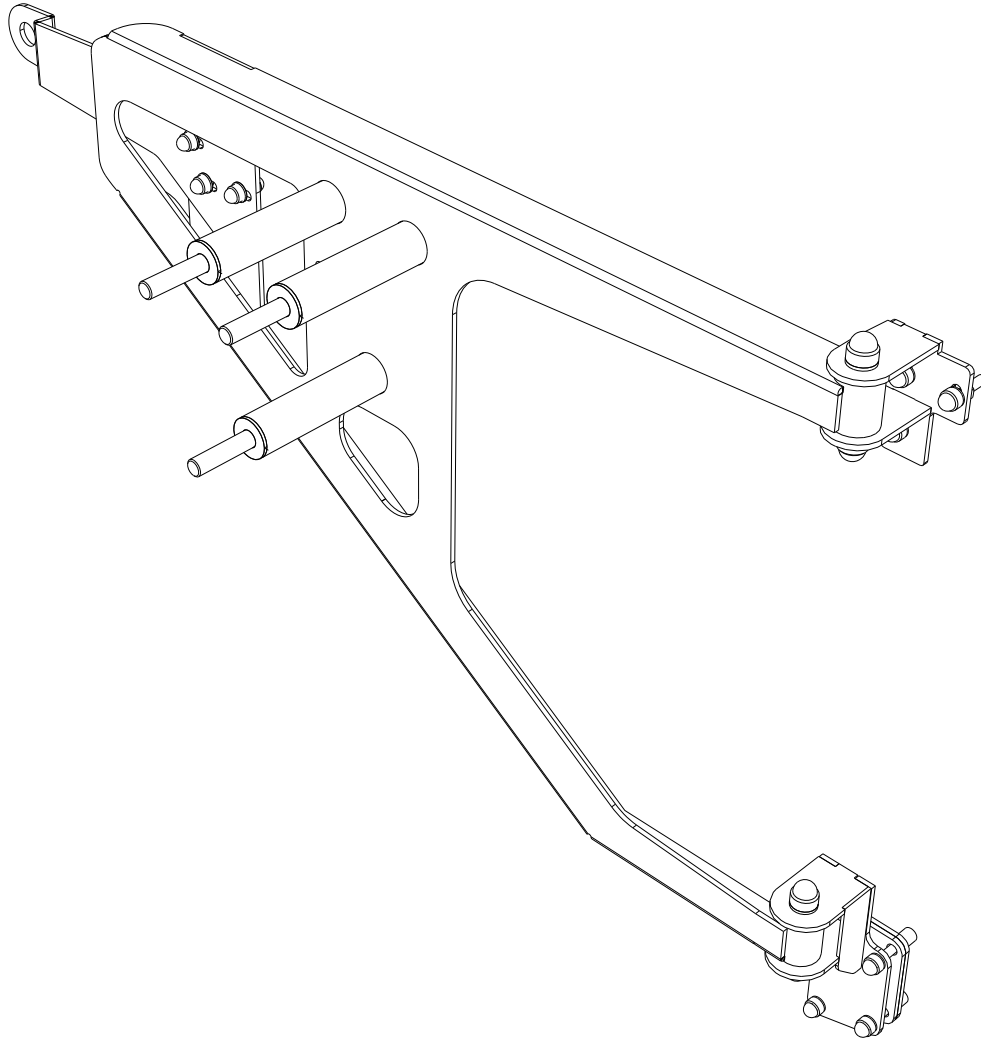


FRONT RUNNER
VEHICLE OUTFITTERS

**LAND ROVER DEFENDER BAKKIE/DC
SPARE WHEEL CARRIER / WITH PLATE**

ENG

RBLD004



READ ME !

Thank you for purchasing a Front Runner Spare Wheel Carrier.

Before you start, take a moment to familiarize yourself with the Fitting Instructions and the components received.

Refer to Page 2 for a list of all the components, quantities and tools required.

IMPORTANT WARNING!

IT IS CRITICAL THAT ALL FRONT RUNNER PRODUCTS BE PROPERLY AND SECURELY ASSEMBLED AND ATTACHED TO YOUR VEHICLE. IMPROPER ATTACHMENT COULD RESULT IN AN AUTOMOBILE ACCIDENT, AND COULD CAUSE SERIOUS BODILY INJURY OR DEATH. YOU ARE RESPONSIBLE FOR ASSEMBLING AND SECURING ALL FRONT RUNNER PRODUCTS TO YOUR VEHICLE, CHECKING THE ATTACHMENTS PRIOR TO USE, AND PERIODICALLY INSPECTING THE PRODUCTS FOR ADJUSTMENT, WEAR AND DAMAGE. THEREFORE, YOU MUST READ AND UNDERSTAND ALL OF THE INSTRUCTIONS AND PRECAUTIONS SUPPLIED WITH YOUR FRONT RUNNER PRODUCT PRIOR TO INSTALLATION OR USE. IF YOU DO NOT UNDERSTAND ALL OF THE INSTRUCTIONS AND CAUTIONS, OR IF YOU HAVE NO MECHANICAL EXPERIENCE AND ARE NOT THOROUGHLY FAMILIAR WITH THE INSTALLATION PROCEDURES, YOU SHOULD HAVE THE PRODUCT INSTALLED BY A PROFESSIONAL INSTALLER OR OTHER QUALIFIED PERSONNEL.

NOTE: Front Runner will not be responsible for any damage caused by the failure to install the product according to these instructions.

Please call us if you have any questions about the installation of this product.

1

GET ORGANIZED

IN THE BOX

1	1 X	Spare Wheel Carrier Frame
2	1 X	Lock Plate
3	1 X	Lower Hinge Bracket
4	1 X	Spacer
5	1 X	Upper Hinge Bracket
6	2 X	Nylon Bush
7	13 X	M8 Nut Cap
8	4 X	M8 x 50 Hex Bolt
9	7 X	M8 SS Spring Washer
10	1 X	M8 x 16 x 1.6SS Flat Washer
11	4 X	M8 Rivnut
12	1 X	M8 Nyloc Nut
13	1 X	M8 x 25 He Bolt
14	1 X	M8 x 35 Hex Bolt
15	1 X	M12 Nut Cap
16	2 X	M12 x 80 Hex Bolt
17	8 X	M12 Flat Washer
18	2 X	M12 Nyloc Nut

TOOLS NEEDED

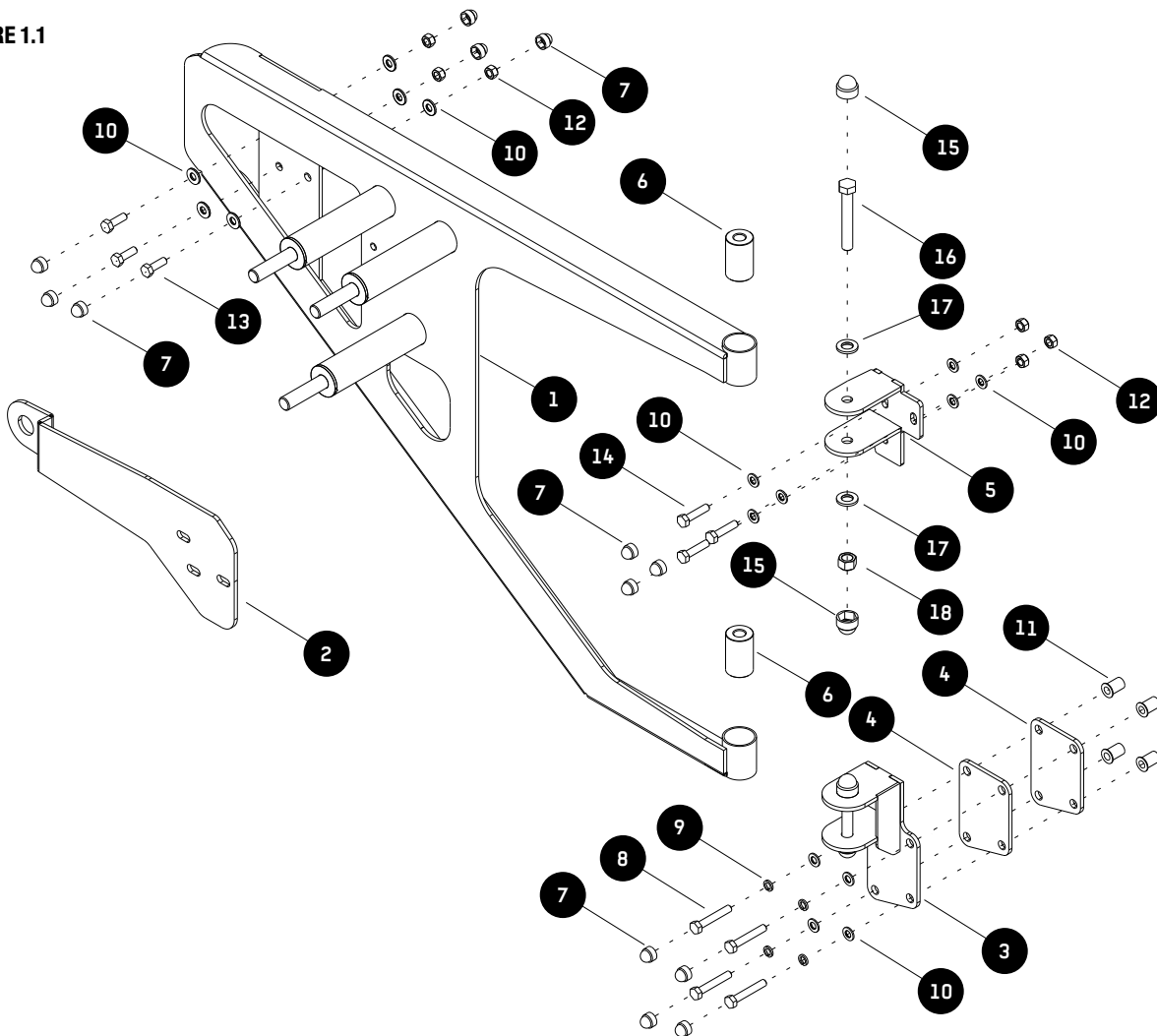


13mm
19mm

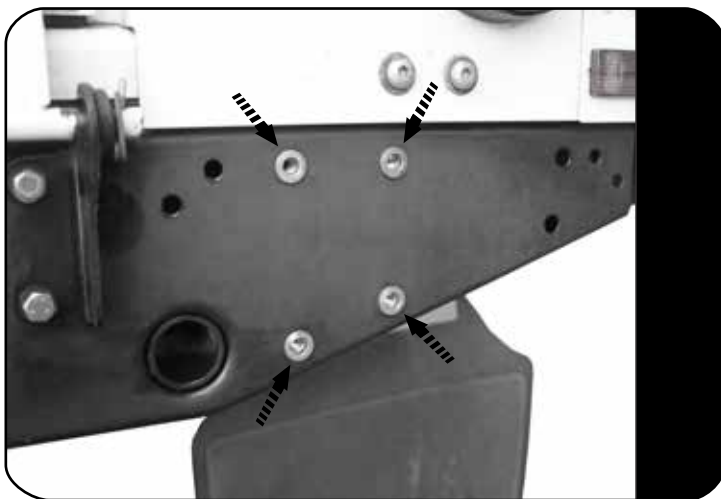


5mm
8,5mm

FIGURE 1.1

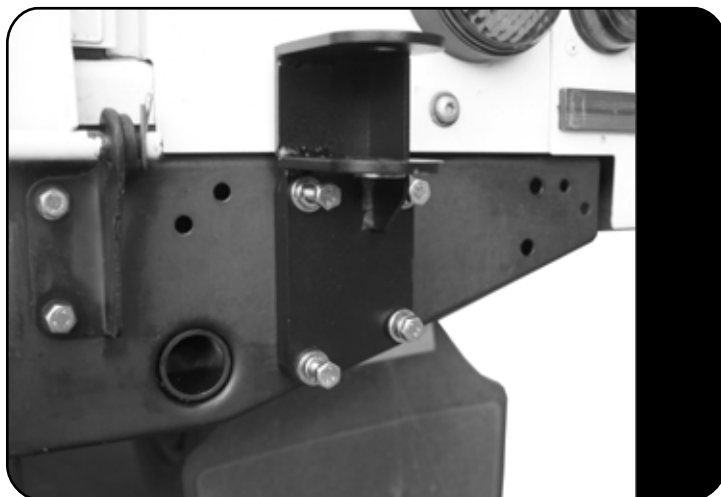


2.1



Set the four M8 Rivnuts (Item 11) into the factory holes in the rear bumper where shown and fully crimp.

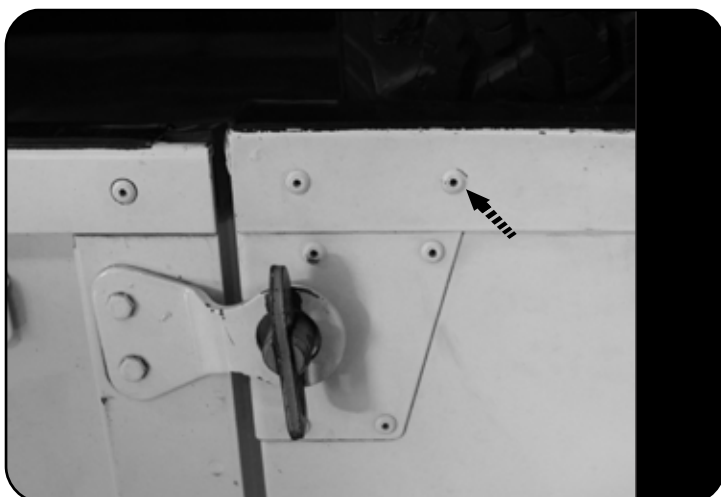
2.2



Loosely fit the Lower Hinge Bracket (Item 3) together with two Spacers (Item 4) to the rear bumper, using M8 x 50 Hex Bolts, M8 SS Spring Washers and M8 x 16 x 1.6SS Flat Washers (Items 8, 9 & 10).

Refer to Figure 1.1

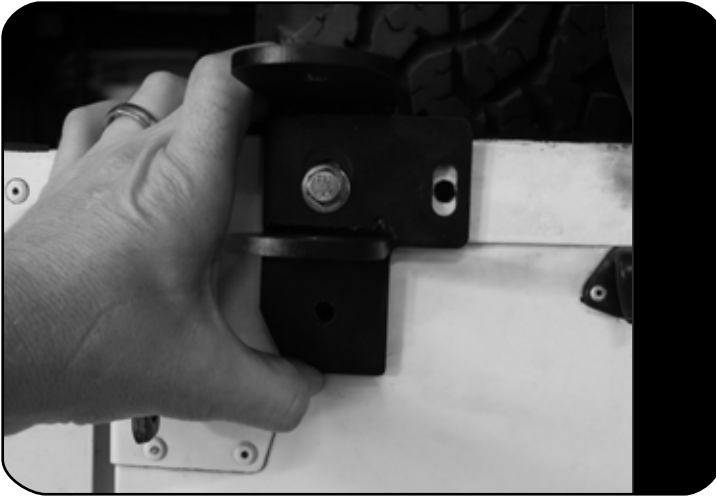
2.3



Using a 6mm drill bit, drill out the pop rivet shown in 2.3.

Open the 6mm hole to 8,5mm.

2.4

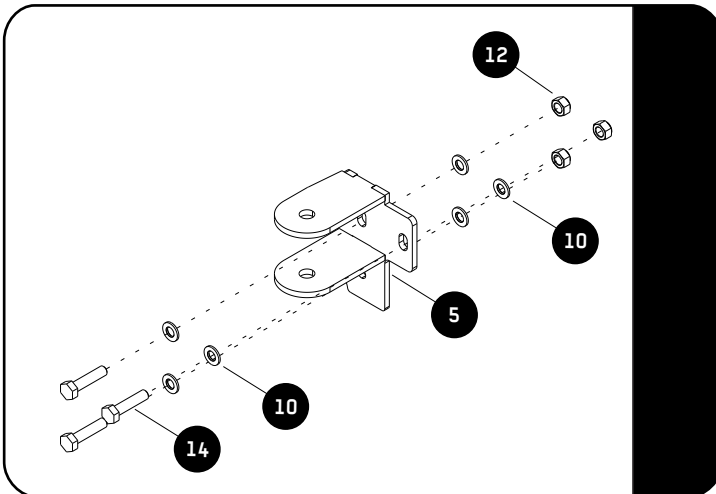


Loosely fit the Upper Hinge Bracket (Item 5) through the 8,5mm hole drilled in 2.3 using one M8 x 35 Hex Bolt, two M8 x 16 x 1.6SS Flat Washers and one M8 Nyloc Nut (Items 10, 12 & 14).

Ensure that the Hinge Bracket is parallel with the top edge of the load bin before marking the two other hole in the Bracket.

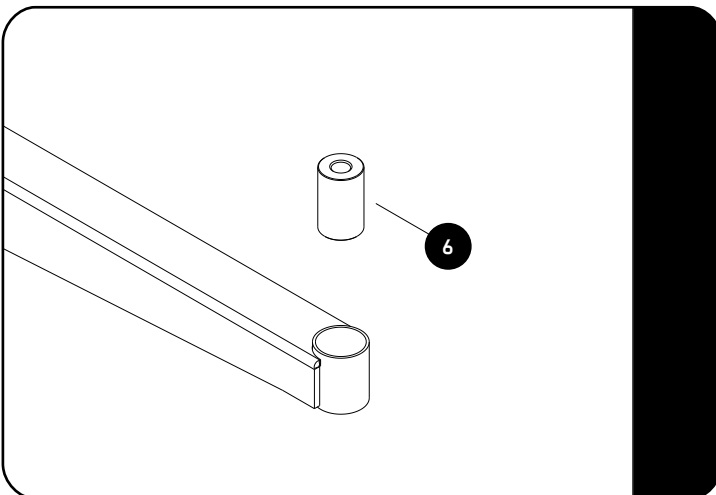
Remove the Upper Hinge Bracket and drill 6mm pilot holes on the marks just made. Open the holes to 8,5mm.

2.5



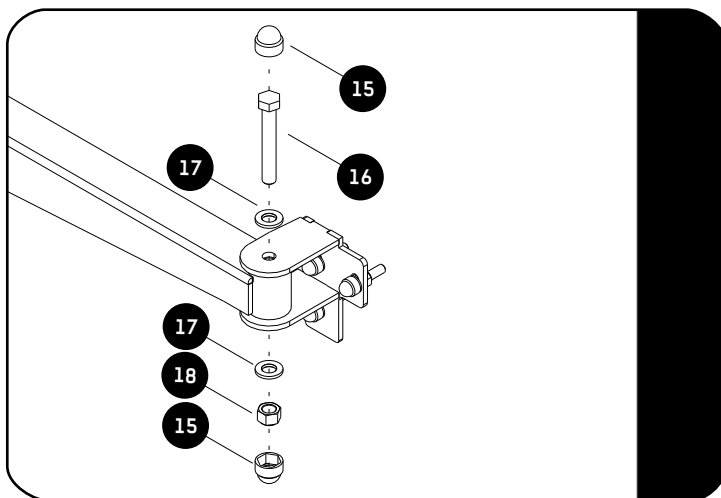
Loosely refit the Upper Hinge Bracket using M8 x 35 Hex Bolts, M8 x 16 x 1.6SS Flat Washers and M8 Nyloc Nuts (Items 10, 12 & 14) as shown.

2.6



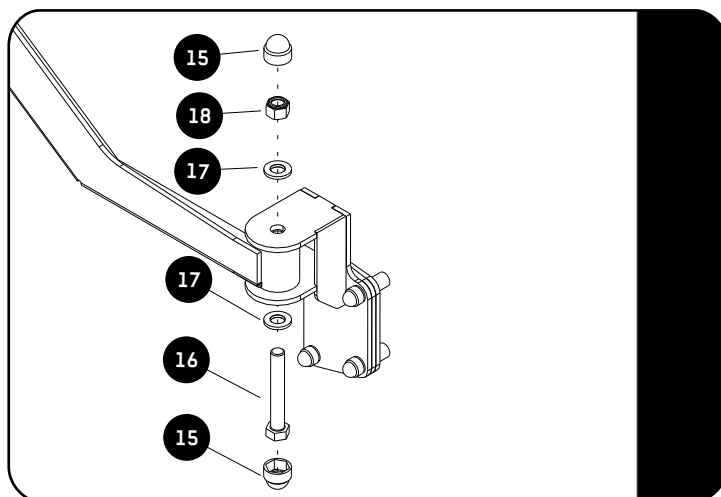
Insert a Bush (Item 6) into the top and bottom hinge points of the Spare Wheel Frame.

2.7



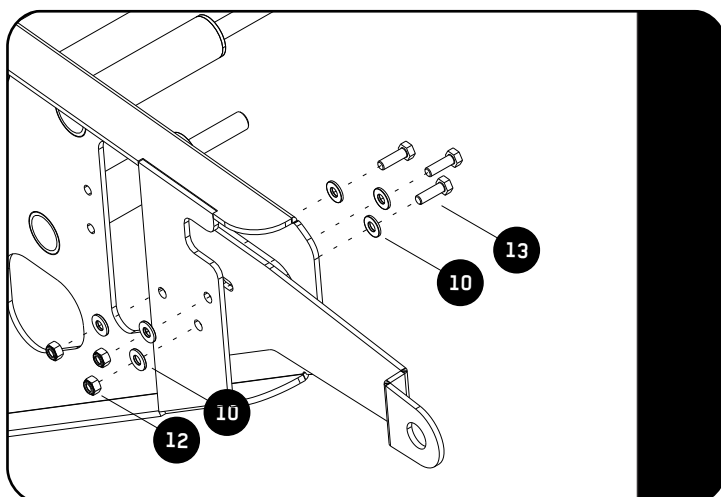
Secure the top hinge point of the Spare Wheel Frame to the Upper Hinge Bracket using a M12 x 80 Hex Bolt, M12 Flat Washers and M12 Nyloc Nut (Items 16, 17 & 18) as shown.

2.8



Secure the bottom hinge point of the Spare Wheel Frame to the Lower Hinge Bracket using a M12 x 80 Hex Bolt, M12 Flat Washers and M12 Nyloc Nut (Items 16, 17 & 18) as shown.

2.9



Loosely fit the Lock Plate (Item 2) to the Spare Wheel Frame using M8 x 25 Hex Bolts, M8 x 16 x 1.6SS Flat Washers and M Nylon Nuts (Items 10, 12 & 13) as shown.

2.10



Remove both anti loose fasteners and add two M12 Flat Washers (Item 17) to space the anti loose fasteners away from the vehicles body.

2.11



Close the Spare Wheel Carrier to ensure that it locates over the anti loose fastener.

Set the Lock Plate and fully tighten the three M8 Hex Bolts.

Bolt the spare wheel into the Spare Wheel Carrier.

Set the Spare Wheel Carrier so that it closes freely over the anti loose fastener.

Fully tighten the Upper and Lower Hinge Brackets.

Place Nut Caps on all bolt heads and nuts that are exposed.

3

FINISH

Congratulations! You did it. Take a step back and admire your work!

4

INSTALL OTHER VEHICLE AND RACK ACCESSORIES

Now's the time to visit your favorite Front Runner Dealer in person or online.

Be sure to tag us. We love to see our gear in action! #FrontRunnerOutfitters #BornToRoam

Share your adventures on:

